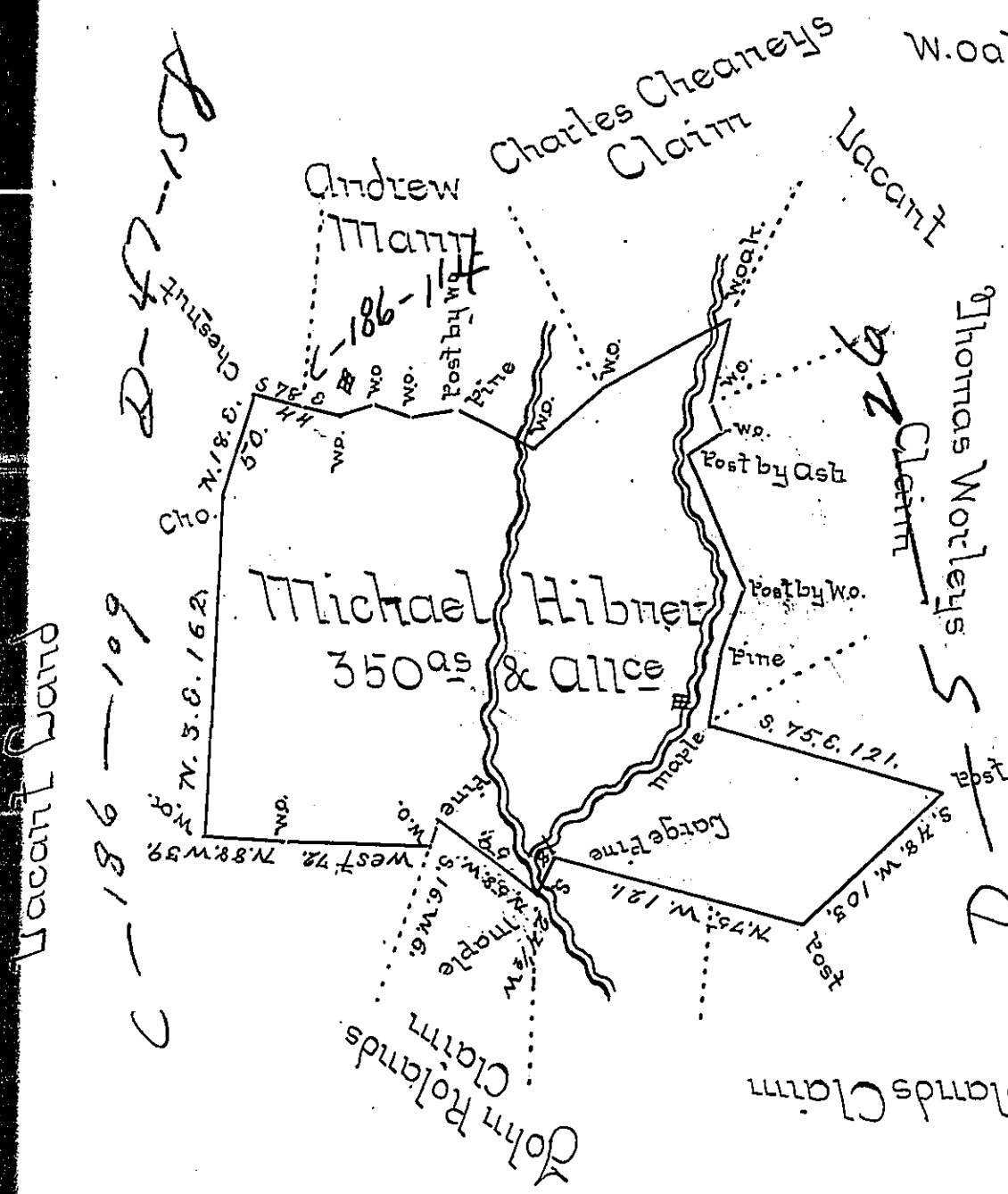


W.oak round to Maple -



N. 72 E. 16.	W.O. #.
S. 75 E. 20.	Post by W.O.
N. 36 E. 27.	Pine
S. 65 E. 43.	W.oak.
N. 51 1/2 E. 43.	W.oak
N. 60 E. 71.	W.oak
S. 12 W. 42.	W.oak
S. 21 E. 74.	W.oak
S. 63 W. 20.	Post by Ash
S. 22 1/2 E. 70.	Post by W.O.
S. 15 W. 24	Pine
S. 12 1/2 W. 36	Maple. #.

Situated on the Waters of Fawn Creek Southampton Township Bedford County, including an improvement, Containing 350 acres allowance &c -

Surveyed for Michael Hibner (Assignee of Thomas Stitt) the 16th day of December 1802 in Pursuance of Warrant dated the 3rd day of March 1800.

William Piper Depy Survey

To Samuel Cochran Esquire }
Surveyor General -

IN TESTIMONY that the above is a copy of the original remaining on file in the Department of Internal Affairs of Pennsylvania, made conformably to an Act of Assembly approved the 16th day of February, 1833, I have hereunto set my Hand and caused the Seal of said Department to be affixed at Harrisburg, this seventh day of August 1900.

James W. Latta
Secretary of Internal Affairs.